

LOG 8

Get it right from
the ground up!

How to select a pallet?

Schoeller Arca Systems' plastic pallets provide the most solid, cost-effective foundation for your cargo operations. Made of heavy-grade PPC / HDPE, their durability, lighter weight, and more sanitary properties give them a much higher return

on investment than traditional wooden pallets. This section reviews the best investments you can make in pallets for every purpose.

1 The 1st step you've already taken; choosing plastic over wood. Your reason to do so had probably to do with the weight savings, hygienic reasons, high return on investment or one of many other good reasons to buy a Schoeller Arca Systems pallet.

2 Define the required load capacity for static, dynamic and racking load so you can choose between a Light, Medium or Heavy pallet.

3 Decide what size pallets you need. Schoeller Arca Systems pallets are available in all common, standard sizes from 600 x 400 small display pallets to 1300 x 1100 mm large export pallets. Of course you also find pallets sizes 1200 x 800 and 1200 x 1000 mm among our extensive range.

4 Choose between BiPP and EOS plastic pallets. BiPP is for Multi-trip use and EOS for limited trips. See more details below:



BiPP®

Built to be used over and over, BiPP plastic pallets are the best choice for controlled closed-loop cargo-systems where the same logistics assets circulate for years, as well as for open system pools. They are made of rugged, top-quality virgin or reground Polyolifines, ensuring a long life under heavy loading conditions. BiPP pallets are stable and safe when stacked – a valuable tool for maximizing the efficiency, productivity, and quality levels of your operations.



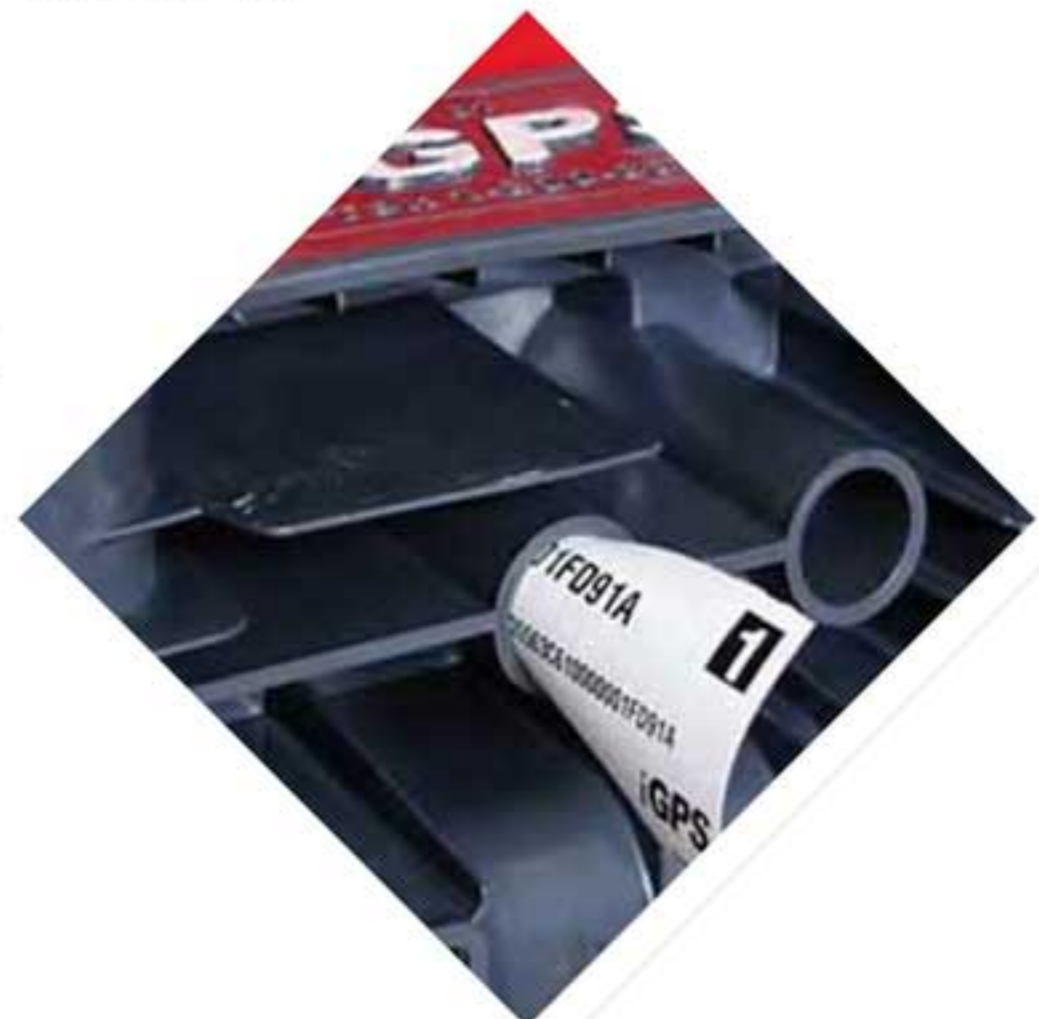
EOS®

Developed by Schoeller Arca Systems as a hygienic, cost-effective substitute for wooden pallets, EOS pallets have become the European standard for one-way or limited-trip export trade. Made of durable, non-porous recycled Polyolifines, they do not require fumigation or pre-treatment (or the customs paperwork that entails), which significantly reduces costs. So, if your pallets are used for export and will not be returned, EOS's cost-effectiveness makes this your smartest option.

EXAMPLE OF A USED APPLICATION. PRESENTING – POOLING INDUSTRY

Intelligent Global Pooling Systems (iGPS) of Florida was the first US company to offer manufacturers and retailers a completely RFID tagged plastic pallet pooling solution. Now, as more and more US customers make the switch from wood to plastic, iGPS is helping to drive the change. The benefits iGPS derives from deploying its fleet of Schoeller Arca Systems RFID tagged plastic pallets include:

- Ability to track pallets in real time
- Optimisation of pallet use
- Near elimination of losses
- Light weight (30% lighter than wood)
- Environmentally friendly (100% recyclable)



LIGHT PALLETS

Light pallets

Versions and Colours

● Black 930

● Multicolour antracite

BiPP black,
other colours on request
EOS Multicolour



CD
Closed deck



SR
Safety rim



nR
No of Runners



OD
Open deck



NE
Nestable



nF
No of Feet



Handling goods in extreme temperatures can affect the performance of your pallets. Please contact us to discuss your personal situation.
For Racking Load Conversion see page 23.



BiPP 6040 L

BiPP Display

Item No	Definition	Ext./mm	Static load	Dyn. load	Rack load	W/kg	Pack unit/Truck load	CD	OD	SR	NE	nR	nF
600 x 400													
1850.006	BiPP 6040 L	600 x 400 x 140	250	250	N/A	1,6	4 x 50 / 6600		✓		✓		4F

EOS Display

Item No	Definition	Ext./mm	Static load	Dyn. load	Rack load	W/kg	Pack unit/Truck load	CD	OD	SR	NE	nR	nF
600 x 400													
1850.007	EOS 6040 L	600 x 400 x 140	150	100	N/A	1,6	4 x 50 / 6600		✓		✓		4F



EOS 6080 L



EOS 6080 LR



EOS 6080 L 3R

EOS Light

Item No	Definition	Ext./mm	Static load	Dyn. load	Rack load	W/kg	Pack unit/Truck load	CD	OD	SR	NE	nR	nF
800 x 600													
1849.002	EOS 6080 L	800 x 600 x 140	500	250	N/A	3,2	2 x 40 / 2640		✓	✓	✓		6F
1849.102	EOS 6080 LR	800 x 600 x 150	500	250	N/A	4,0	2 x 15 / 990		✓	✓			3R
6101.502	EOS 6080 L 3R	800 x 600 x 145	500	250	N/A	3,8	2 x 37 / 2442		✓	✓	✓		3R



EOS 1140 L



EOS 1208 SLR



EOS 1212 L

EOS Light

Item No	Definition	Ext./mm	Static load	Dyn. load	Rack load	W/kg	Pack unit/Truck load	CD	OD	SR	NE	nR	nF
1200 x 800													
1869.008	EOS 1208 L (P)	1200 x 800 x 155	2500	1000	N/A	6.5	50 / 1650		✓	✓	✓		9F
1869.002	EOS 1208 LR (P)	1200 x 800 x 165	2500	1000	STT*	8.8	23 / 598		✓	✓			3R
5591.510	EOS 1208 SL	1200 x 800 x 130	2500	1000	N/A	5.0	40 / 1040		✓	✓	✓		9F
5591.600	EOS 1208 SLR	1200 x 800 x 148	2500	1000	N/A	6.3	23 / 598		✓	✓			3R
1854.508	EOS 1208 L	1200 x 800 x 155	2500	1000	N/A	5.5	50 / 1650		✓	✓	✓		9F
1844.552	EOS 1208 LR	1200 x 800 x 165	2500	1000	N/A	7.0	23 / 598		✓	✓			3R
1200 x 1000													
1870.008	EOS 1210 L (P)	1200 x 1000 x 155	2500	1000	N/A	7.5	50 / 1300		✓	✓	✓		9F
1870.002	EOS 1210 LR (P)	1200 x 1000 x 160	2500	1000	STT*	10.5	23 / 506		✓	✓			9F
5592.500	EOS 1210 SL	1200 x 1000 x 130	2500	1000	N/A	6.5	40 / 1040		✓	✓	✓		9F
5592.510	EOS 1210 SLR	1200 x 1000 x 148	2500	1000	STT*	7.8	23 / 506		✓	✓			3R
1855.508	EOS 1210 L	1200 x 1000 x 155	2500	1000	N/A	6.5	50 / 1300		✓	✓	✓		9F
1846.552	EOS 1210 LR	1200 x 1000 x 165	2500	1000	STT*	8.5	23 / 1040		✓	✓			3R
1140 x 1140													
1853.508	EOS 1140 L	1140 x 1140 x 150	2500	1000	N/A	9.0	40 / 880		✓	✓	✓		9F
1842.552	EOS 1140 LR	1140 x 1140 x 165	2500	1000	STT*	11.0	23 / 460		✓				3R
1200 x 1200													
1856.508	EOS 1212 L	1200 x 1200 x 155	2500	1000	N/A	8.0	40 / 880		✓		✓		9F

* STT (Subject To Test) - look at page 23 for more information.



CONTACT OUR SPECIALIST
FOR MORE INFORMATION!
CALL 800-LOC8 (5628)



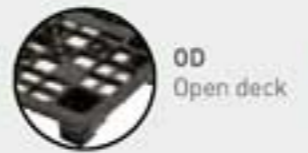
EOS 6080 L 3R

MEDIUM PALLETS

Medium pallets

Versions and Colours

- Black 930
 - Grey 502
 - Green 041
 - Multicolour antracite
- BiPP black, other colours on request
EOS Multicolour



Handling goods in extreme temperatures can affect the performance of your pallets. Please contact us to discuss your personal situation. For Racking Load Conversion see page 23.



BiPP 0833 MOD



BiPP 0830 MCD



BiPP 1210 MR + 3R

BiPP Medium

Item No	Definition	Ext./mm	Static load	Dyn. load	Rack load	W/kg	Pack unit/Truck load	Colour	CD	OD	SR	NE	nR	nF
1200 x 800														
7340.000	BiPP 1208 MR + 3R	1200 x 800 x 145	3500	1000	600	11.0	16 / 528			✓	✓		3R	
2715.510	BiPP 0830 MOD	1200 x 800 x 165	2500	500	N/A	13.2	15 / 495	Grey		✓			3R	
2714.510	BiPP 0830 MCD	1200 x 800 x 165	2500	500	N/A	13.7	15 / 495	Grey	✓		✓		3R	
1200 x 1000														
1880.007	BiPP 1210 MR + 3R	1200 x 1000 x 160	3500	1250	600	14.0	15 / 390			✓	✓		3R	
1880.006	BiPP 1210 MR + 5R	1200 x 1000 x 160	3500	1250	600	14.5	15 / 390			✓	✓		5R	



EOS 1208 MR + 3R



EOS 1210 M 3R



EOS 1210 M 6R

EOS Medium

Item No	Definition	Ext./mm	Static load	Dyn. load	Rack load	W/kg	Pack unit/Truck load	CD	OD	SR	NE	nR	nF
1200 x 800													
7340.500	EOS 1208 MR + 3R	1200 x 800 x 145	3500	750	500	11.0	16 / 528			✓	✓		3R
1200 x 1000													
1880.001	EOS 1210 M 3R	1200 x 1000 x 165	3500	1250	500	14.5	15 / 390			✓	✓		3R
1880.003	EOS 1210 M 6R	1200 x 1000 x 165	3500	1250	500	16.0	15 / 390			✓	✓		6R

Heavy pallets



BiPP 1208 HR + 3R



BiPP 1210 HR + 6R



BiPP 1212 HR 6R

BiPP Heavy

Item No	Definition	Ext./mm	Static load	Dyn. load	Rack load	W/kg	Pack unit/Truck load	Colour	CD	OD	SR	NE	nR	nF
800 x 600														
6100.754	BiPP 6080 HOD 3R	800 x 600 x 147	1000	500	N/A	5.0	2 x 15 / 990	Green	✓	✓		3R		
1882.001	BiPP 6080 HR + 3R	800 x 600 x 160	1000	500	N/A	8.5	2 x 15 / 990			✓	✓		3R	
1200 x 800														
7341.000	BiPP 1208 HR + 3R	1200 x 800 x 145	4500	1250	800	18.0	16 / 528			✓	✓		3R	
1876.002	BiPP Europal 800	1200 x 800 x 150	4500	1250	500	23.0	23 / 598		✓		✓		3R	
2715.516	BiPP 0833 MOD	1200 x 800 x 165	4500	1250	1000	18.0	15 / 495	Grey		✓	✓		3R	
1200 x 1000														
7342.002	BiPP 1210 HR+ 3R	1200 x 1000 x 160	4500	1250	1250	21.5	15 / 390			✓	✓		3R	
8551.200	BiPP 1210 HR 3R II	1200 x 1000 x 191	4500	2000	1500	26.0	12 / 312	Grey		✓	✓		3R	
1878.002	BiPP Recyclingpal 1210	1200 x 1000 x 150	4500	1250	1250	28.0	23 / 506		✓		✓		3R	
1873.005	BiPP 1210 HR 6R	1200 x 1000 x 165	4500	1250	1250	22.5	15 / 390			✓	✓		6R	
7342.000	BiPP 1210 HR + 6R	1200 x 1000 x 160	4500	1250	1250	22.0	15 / 390			✓	✓		6R	
1140 x 1140														
1871.005	BiPP 1140 HR 6R	1140 x 1140 x 170	4500	1250	1250	26.0	15 / 330			✓	✓		6R	
1200 x 1200														
1874.005	BiPP 1212 HR 6R	1200 x 1200 x 170	4500	1500	1250	27.0	14 / 308			✓	✓		6R	
1300 x 1100														
1875.005	BiPP 1311 HR 6R	1300 x 1100 x 165	4500	1250	1250	25.5	15 / 330			✓	✓		6R	



EOS 1208 HR 3R



EOS 1210 HR 6R



EOS 1311 HR 6R

EOS Heavy

Item No	Definition	Ext./mm	Static load	Dyn. load	Rack load	W/kg	Pack unit/Truck load	CD	OD	SR	NE	nR	nF	
1200 x 800														
1865.002	EOS 1208 HR 3R	1200 x 800 x 160	3500	1000	600	15.5	15 / 495		✓	✓		3R		
1200 x 1000														
1866.005	EOS 1210 HR 6R	1200 x 1000 x 165	4500	1250	1000	22.5	15 / 390		✓	✓		6R		
1140 x 1140														
1864.005	EOS 1140 HR 6R	1140 x 1140 x 170	4500	1250	1000	26.0	14 / 308		✓	✓		6R		
1200 x 1200														
1867.005	EOS 1212 HR 6R	1200 x 1200 x 170	4500	1250	500	27.0	14 / 308		✓	✓		6R		
1300 x 1100														
1868.005	EOS 1311 HR 6R	1300 x 1100 x 165	4500	1250	1000	25.5	15 / 330		✓	✓		6R		

Cleanroom pallets

Versions and Colours



BiPP black, other colours on request
EOS Multicolour

Handling goods in extreme temperatures can affect the performance of your pallets. Please contact us to discuss your personal situation. For Racking Load Conversion see page 23.



BiPP Cleanroom 1208 V3 3R



BiPP Cleanroom 1210 V1

BiPP Cleanroom

Item No	Definition	Ext./mm	Static load	Dyn. load	Rack load	W/kg	Pack unit/Truck load	Colour	CD	OD	SR	NE	nR	nF
1200 x 800														
3312.001	BiPP 1208 V3 3R	1200 x 800 x 155	4500	1200	1000	18.0	15 / 495	White	✓		✓		3R	
1200 x 1000														
3313.001	BiPP 1210 V1	1200 x 1000 x 158	4500	1250	1250	24.5	15 / 390	Beige	✓		✓		5R	

Conductive pallets



BiPP 1208 OD 3R Conductive

BiPP Heavy

Item No	Definition	Ext./mm	Static load	Dyn. load	Rack load	W/kg	Pack unit/Truck load	CD	OD	SR	NE	nR	nF
1200 x 800													
3302.001	BiPP 1208 OD 3R	1200 x 800 x 157	4500	1000	1000	20.0	15 / 495		✓	✓		3R	
1200 x 1000													
3306.001	BiPP 1210 OD 3R	1200 x 1000 x 160	4500	1250	1250	23.0	15 / 390		✓	✓		3R	

BiPPBox™

Versions and Colours



The BiPPBox is an alternative to the Magnum when the weight of the load does not exceed 250 kg. It is designed with a robust pallet and lid component. When stacked, the pallet and lid are nesting into

each other for an optimal secure handling. The wall sleeve is made of plastic or cardboard material and fits into the base when handled empty. Pallets/lids also available separately.



Item No	Definition	External/mm	Version	Weight/kg	Colour	Max load / container	Density
1200 x 800							
1835.100	BB 1208 LC	1200 x 800 x 760	P, Q	23.0	Grey	250 kg	2500 gr
1835.500	BB 1208 LC	1200 x 800 x 970	P, R	23.5	Black	250 kg	2500 gr
1200 x 1000							
1836.500	BB 1210 LC	1200 x 1000 x 1170	P, R	24.5	Black	250 kg	2500 gr
1836.100	BB 1210 LC	1200 x 1000 x 960	P, Q	24.0	Grey	250 kg	2500 gr

Racking load conversion protocol based on 25 kg bags test

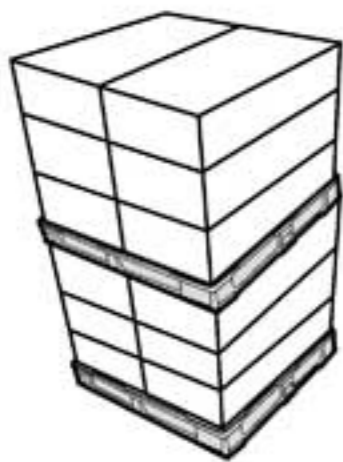
Indication conversion factor* Example BiPP 1210 HR+ 6R (based on ISO 8611-3)	Maximum racking load		
Uniformly distributed 25 kg granulate bags (bonded)	Factor	1	1250 kg
Uniformly placed crates (unbounded, column stacked)	Factor	1	1250 kg
Uniformly placed crates (bounded, cross stacked)	Factor	1.25	1563 kg
Concentrated loads* (Big bags)	Factor	0.75	938 kg

* Depending on load type and subject to test by Schoeller Arca Systems.

Warranty
Schoeller Arca warrants 25 trips on BiPP Pallets after written approval from Schoeller Arca Systems, respecting the handling instructions. Send your request for contract proposal to pallet-service@schoellerarca.com.

Remark light pallets
STT Racking load subject to test

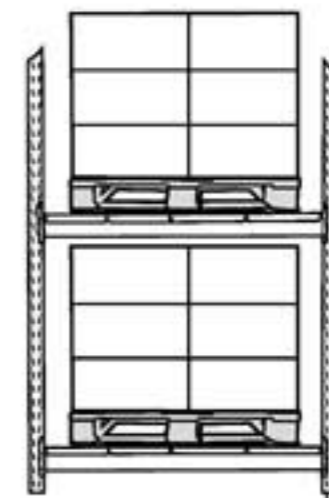
Load definitions



Static load Max
Total load of stacked pallets placed on a pallet on flat floor.



Dynamic load Max
Uniformly distributed load that a pallet can carry when transported by forklift.



Racking load Max
Uniformly distributed load that a pallet can carry in a drive-in racking system, without central support, based on ISO 8611-3 described racking system (maximum allowed deflection is 2 % of the length of racked side) with 25 kg bags. Subject to test (STT) for light pallets, depending type of racking.

Customised solutions



Identification through embossing.



Identification through hot stamp.



Antislip



Safety rim



CONTACT OUR SPECIALIST
FOR MORE INFORMATION!
CALL 800-LOC8 (5628)

